

# OTZI THE ICEMAN INVESTIGATION

**INSTRUCTIONS:** Complete the graphic organizer as you investigate clues about Otzi the Iceman.

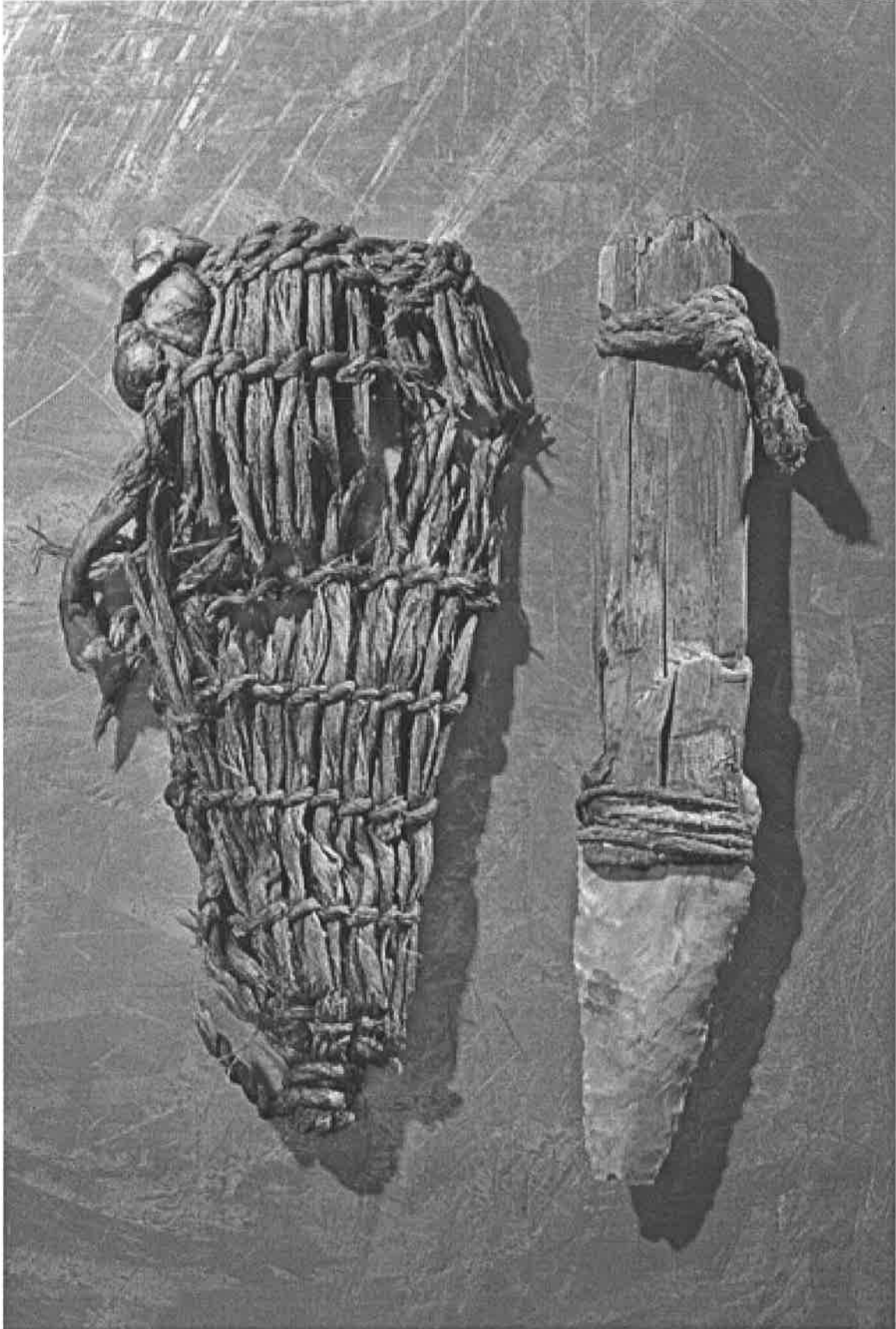
Station	Background Info	Analysis
<b>#1 Body</b>	This is the Iceman's body. It was found over 10,000 feet up in the Alps. Carbon-dating shows that he died about 5,300 years ago. Study of his body revealed five broken ribs on his right side. His stomach contained no food. Scientists found disease producing bacteria in his stomach and lungs. His body also contained grains of wheat, and there was copper residue in his hair.	What can you infer about the Iceman's life from this? State your reasons.
<b>#2 Pouch</b>	This pouch was found near the Iceman. In it were several objects, including a fungus ball, three different-sized pieces of flint, and a pencil-like splinter made from a goat or sheep bone. There were also a couple of sloe berries in the pouch. The berries are the fruit of the blackthorn bush, which grows below the mountains, and are ready to eat after the first frost.	What can you infer about the Iceman's life from this? State your reasons.
<b>#3 Ax</b>	This is the Iceman's ax. The handle was made of a very strong wood. The blade was made of copper that had been melted and poured into a mold. There was "wheat sheen" on the blade of the ax, suggesting that it had been used to cut wheat. The age of the ax was a matter of dispute for some time. Due to its style and its rusty color, which made it look like iron, it was originally thought to be several thousand years old. When testing showed the metal to be copper, the age was pushed back further. When carbon dating revealed the Iceman to be about 5,300 years old, there was a new mystery. He would have lived during what is termed the Stone Age, and would not have known copper. The question became: What was a Stone Age man doing with a copper ax?	What can you infer about the Iceman's life from this? State your reasons.
<b>#4 Boots</b>	These are the Iceman's boots. Each consisted of an oval piece of leather, the edges turned up and bound with strong leather straps. The soles were made of cowhide. Inner socks made of knotted grass held grass stuffing in place for warmth. There were grains of wheat on the boots.	What can you infer about the Iceman's life from this? State your reasons.
<b>#5 Quiver and Arrows</b>	This is the Iceman's fur quiver. The fur was probably that of a deer. The quiver's strap and supporting strut were broken. The bow that he carried was not finished. The quiver contained 12 arrows, only 2 of them finished. The finished arrows had flint arrowheads, wooden shafts, and feathers of a large brownish bird. The feathers were attached by means of birch tar and long strings of sheep's wool.	What can you infer about the Iceman's life from this? State your reasons.

**REFLECTION QUESTION:** Do you think Otzi was part of a paleolithic hunter-gatherer society, or a neolithic farming society? Explain your opinion with evidence from the sources.

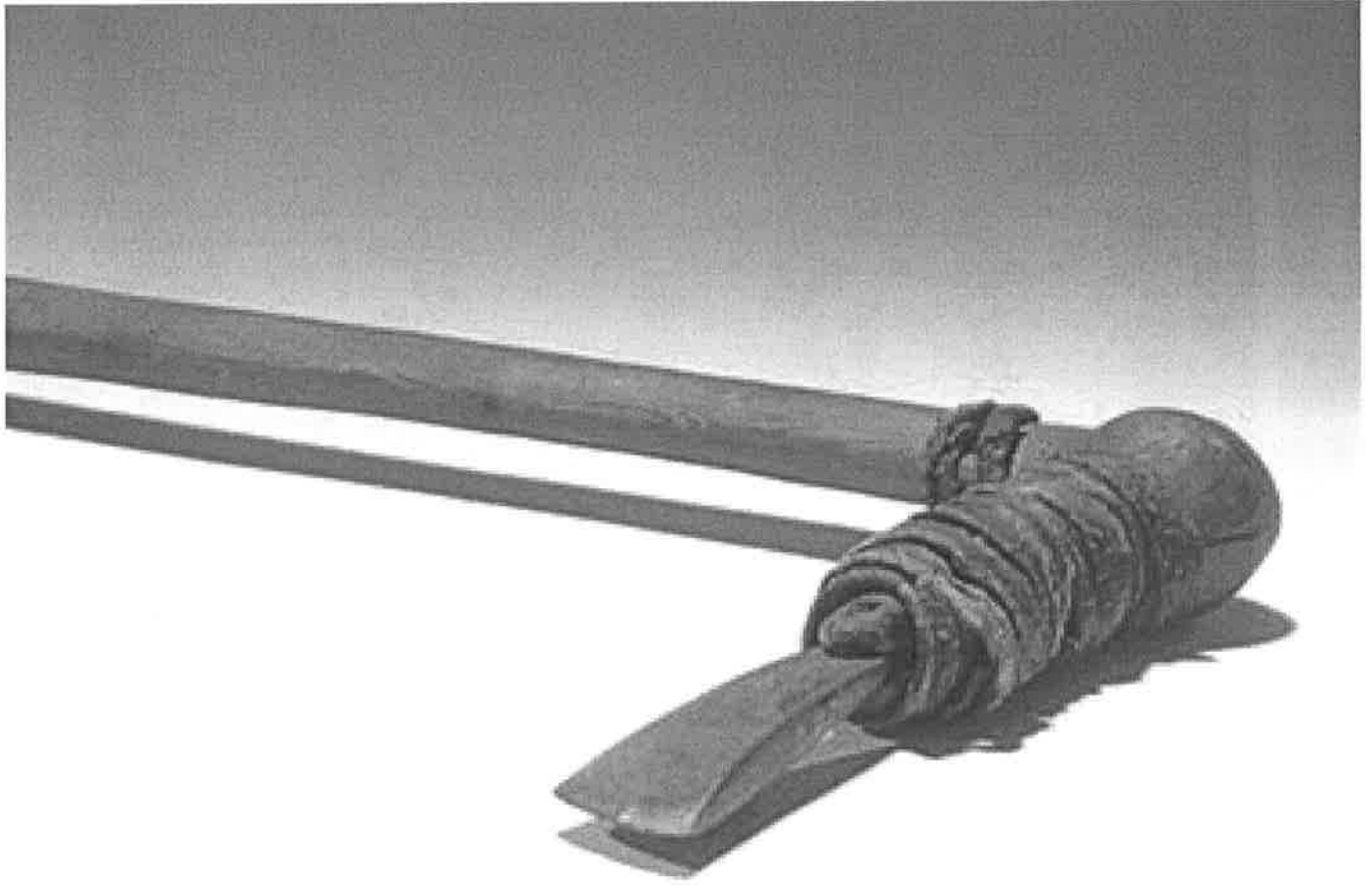
## STATION #1: OTZI THE ICEMAN



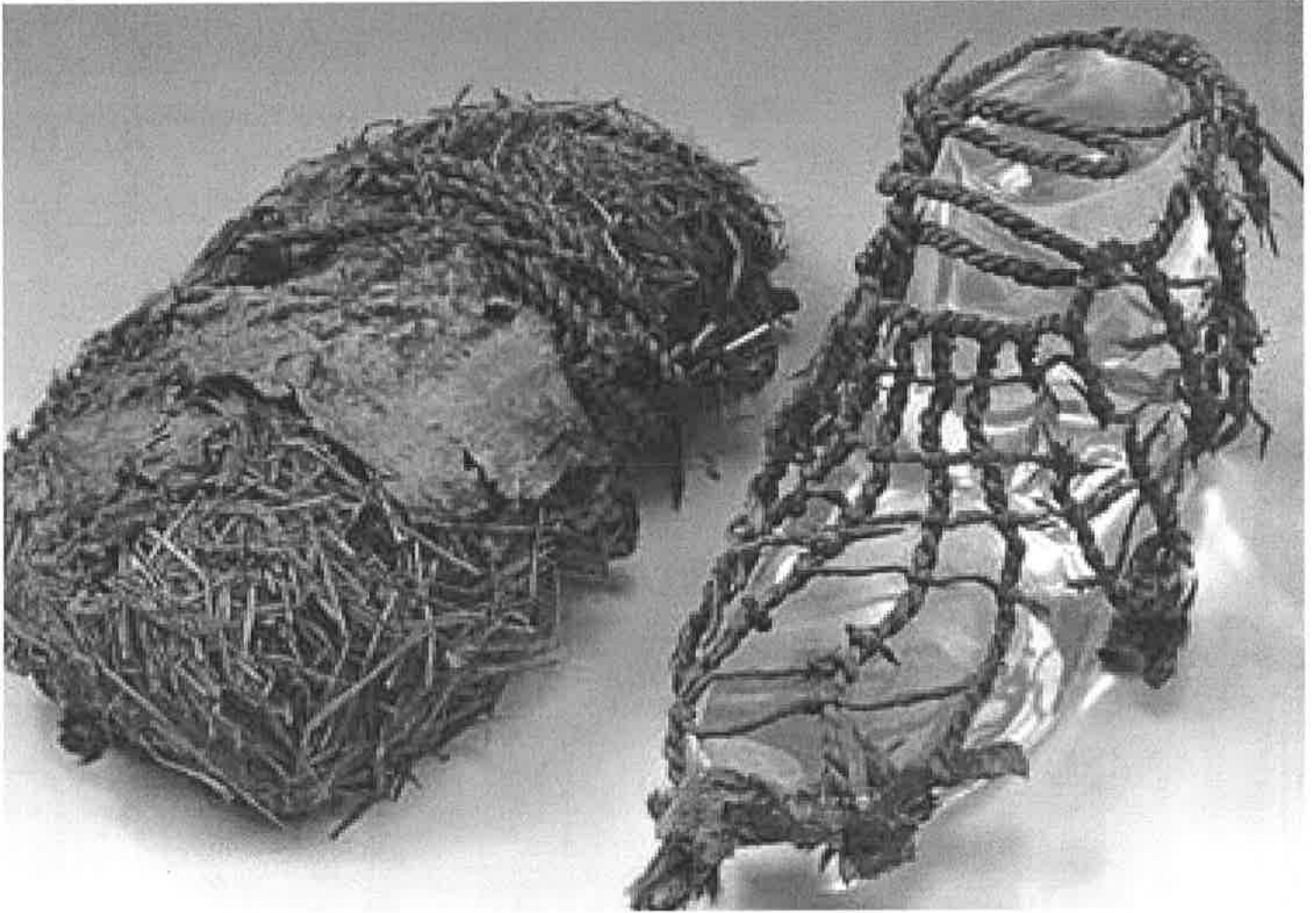
## STATION #2: OTZI'S POUCH



### STATION #3: OTZI'S AX



## STATION #4: OTZI'S SHOES



## STATION #5: OTZI'S QUIVER AND ARROWS

